

Extensively Refurbished Offices To Let

19 Great Winchester Street, London, EC2



Transport Links

- 0.20 miles from Liverpool Street
- 0.30 miles from Bank
- 0.30 miles from Moorgate
- 0.50 miles from Monument

Lease

New lease available direct from the landlord on flexible terms.

Rates Payable (2021/22)

Estimated at £22.50 per sq.ft

However, all interested parties should make their own enquiries.

Accommodation

5 th Floor	1,319 sq ft	122m ²	
4 th Floor	1,319 sq ft	122m ²	
3 rd Floor	1,319 sq ft	122m ²	
2 nd Floor	1,319 sq ft	122m ²	
1 st Floor	1,338 sq ft	124m ²	(Fitted Out)
Total:	6,614 sq ft	614m²	

Rent

£59.50 per sq ft. per annum

Service Charge

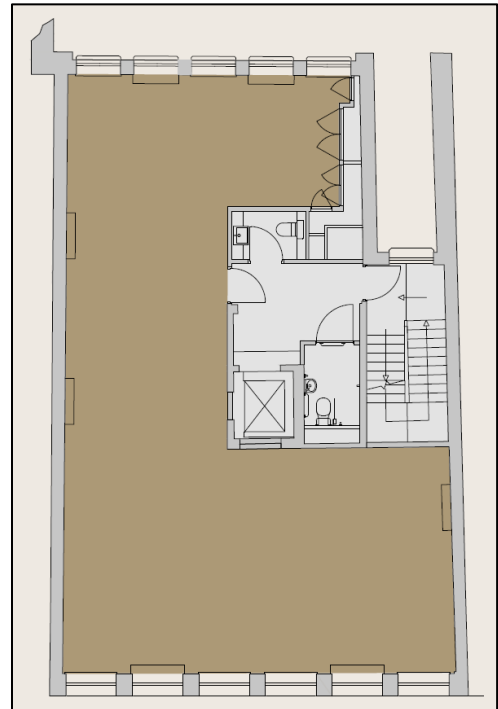
Estimated at £12.38 per sq ft. per annum

VAT

The building has been elected for VAT.

Amenities

- Newly refurbished
- Bespoke fitted solutions available
- VRV Air-conditioning
- Commissionaire/Receptionist with 24 hour access
- Raised floors
- Plastered ceilings with feature lighting
- Shower and bike storage facilities
- EPC - B(40)



Typical Floor Plan

Newton Perkins

Jack Wells – 07741 900 431
e-mail: jw@newtonperkins.com

Jonathan Beilin – 07976 392 016
email: jb@newtonperkins.com

Newton Perkins LLP, Peek House, 20 Eastcheap, London EC3M 1NP

Newton Perkins for themselves and for the vendors or lessors of this property whose agents they are given notice that:- (1) The particulars are set out as a general outline for the guidance of the intending purchasers and do not constitute part of an offer or contract; (2) All descriptions, dimensions, references to condition and necessary permissions for use and occupation and other details are given without responsibility and any intending purchasers should not rely on them as standards or representations of fact but must satisfy themselves by inspection or otherwise as to the correctness of each of them; (3) No persons in the employment of Newton Perkins has any authority to make or give any representation or warranty whatsoever in relation to this property